

**Part I Graph-based Presentation**

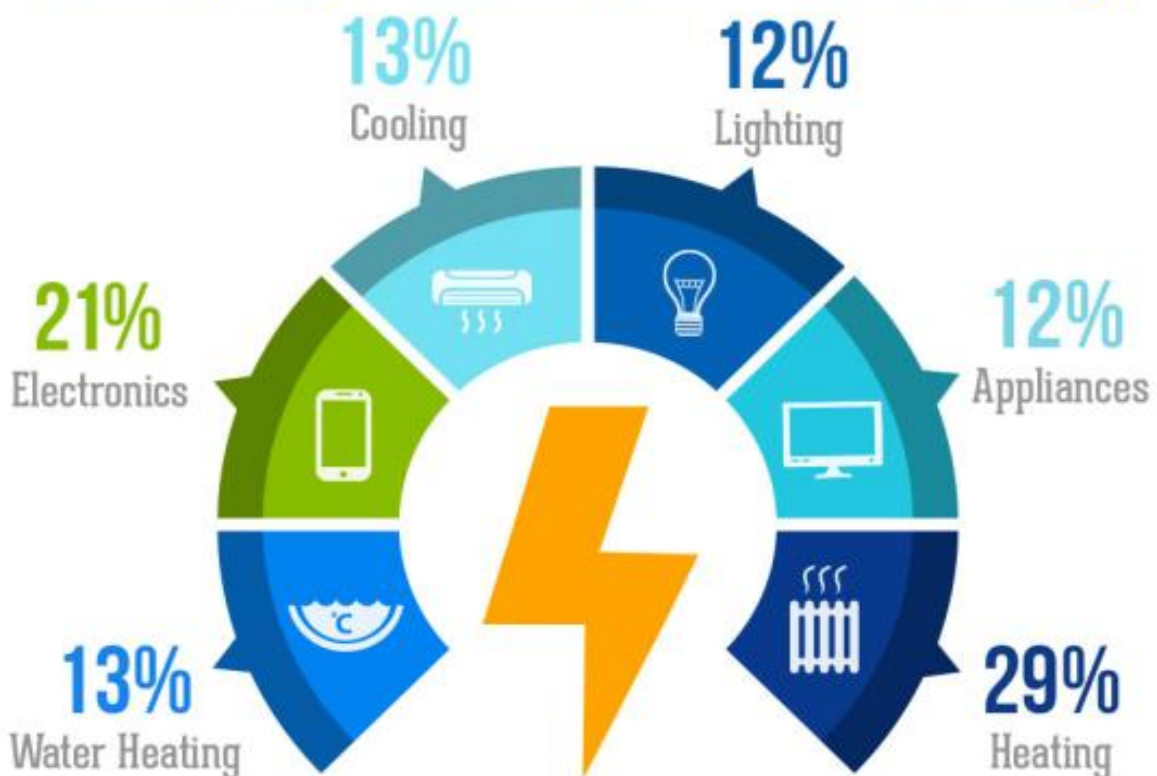
**(3 minutes)**

**Task:** You are required to talk about the following graphic. Please first describe and analyze how the average American uses his or her electricity/energy at home and where it is allotted, and then offer some suggestions on how to save money and the environment alike.

You'll have 3 minutes for your presentation.




**Electricity Usage Breakdown [How We Spend Our Energy]**



Now you'll read a leaflet about two activities people can enjoy at Life Science Center, a unique educational resource based in Newcastle upon Tyne, UK.

# ROBOTS

## THEN AND NOW



### OPENS 26 MAY 2018

*Robots – then and now* is a new exhibition booting up at Life Science Centre. The exhibition, created by the Science Museum in London, celebrates the 500-year work-in-progress story of building automated machines. Start your journey with the humble beginnings of 16th century mechanical automatons before marching forward through the rich history of robotics to the latest humanoids equipped with artificial intelligence.

Some of the exhibits are interactive – Pepper the Robot loves to fist bump with visitors! All of the exhibits add to the story of robotics and will bring new 'life' to a wide variety of subjects, including human biology, psychology and ethics.

Visit [life.org.uk/robots](http://life.org.uk/robots) for further details or contact our bookings line on **(0191) 243 8223**.

DEVELOPED BY  
**SCIENCE MUSEUM**

Maria: ©WSM Art - Walter Schulze-Mittendorf

## Ice skating until 9 February 2018\*

Why not combine your visit to Life with a whirl on our open-air ice rink?

Recreational ice skating can lead on to a variety of winter sports, as well as improve posture and balance. Life's ice marshals are on hand to provide coaching for tentative skaters and we have special packages available if you would like to combine a skate with a visit to Life Science Centre or with a workshop (see back cover for prices).

\*The ice rink will run until 18 February and is available to schools until 9 February.



**New words and phrases :** 1)boot up : be ready to work ; 2)automated :machine-controlled ; 3)automaton : a small robot ; 4) humanoid: a machine or robot that looks and behaves like a human; 5) recreational : 休闲的 ; 6) posture : the position in which you hold your body when standing or sitting ; 7)marshal : coach ; 8)tentative : not confident

**Task:** Suppose you're a staff member at Life Science Center. Now you're taking enquiries from a parent who is interested in visiting Life with his/her children. You will answer the questions and describe the activities.

You will begin the conversation with greetings.

[Contestant: the staff member at Life Science Center.

Question- master: the parent who is interested in visiting Life.

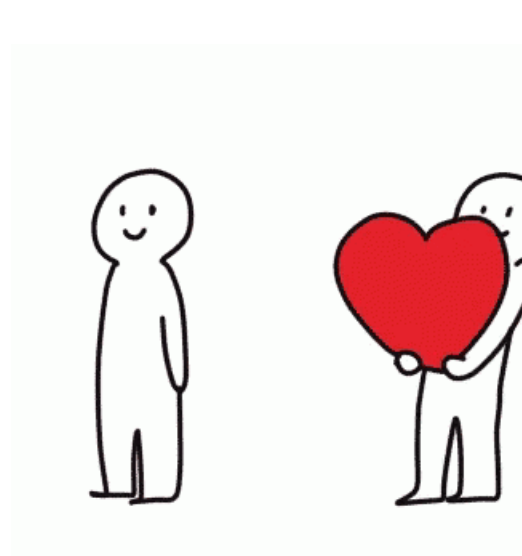
Number of questions: 6-10]

### Part III Debate

(5 minutes)

Maybe you held the door for someone, but they didn't say thank you. Or perhaps you went out of your way to help a person, only to discover afterward that he or she wasn't very nice after all or even hurt you in return. Feeling slighted after doing someone a kindness seems unavoidable sometimes.

After going through such an experience, you could be forgiven for never wanting to trust others ever again, no matter how much trouble they seemed to be in. But if everyone thought like that, and was indifferent to everyone else, where would our society be?



**The question is:** Should we remain kind to other people even after the negative experiences we had of helping others?

**FOR side:** We should always be kind to other people even after the negative experiences we had of helping others.

**AGAINST side:** We should **NOT** be kind to other people after the negative experiences we had of helping others.